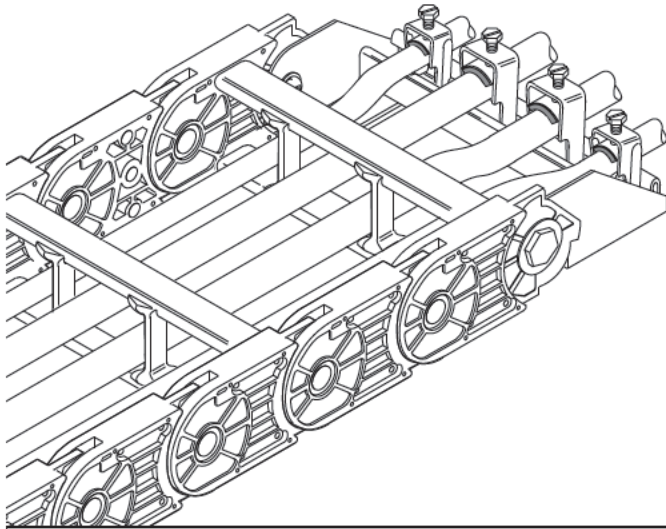
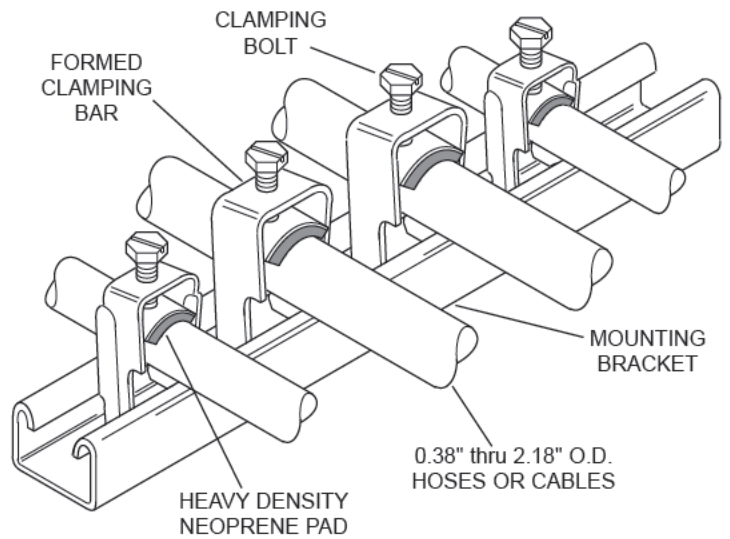
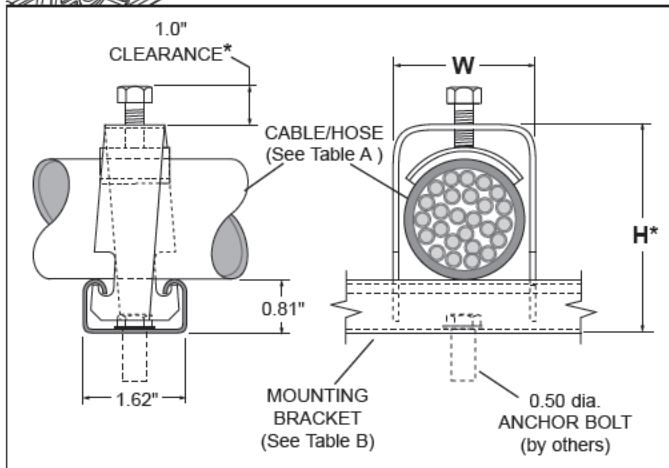


GLEASON® PowerTrak® CABLE/HOSE CLAMPS



- Affixes hoses or cables at ends of trak to prevent undue wear or stress.
- Six sizes, for hose or cable 0.38" to 2.18" O.D.
- Rugged zinc plated steel for long life.
- Heavy duty galvanized steel mounting bracket.
- All clamps fit one mounting bracket. To install cable, simply twist proper size clamp into mounting bracket and securely tighten clamping bolt.



**MOUNTING BRACKET
MODEL CHART-TABLE B**

* Check for clearance at *fixed* end on long trak runs in guide tray.
Dimension H + 1.0" must not exceed height of trak link. Use bar clamp in this application. Consult factory for details.

CLIP MODEL CHART-TABLE A

CABLE / HOSE O.D. (inches)	WIDTH W (inches)	HEIGHT H (inches)	CLIP PART NUMBER
0.38 thru 0.62	1.1	2.1	04095101
0.63 thru 0.88	1.4	2.4	04095102
0.89 thru 1.12	1.6	2.5	04095103
1.13 thru 1.38	2.1	2.8	04095104
1.39 thru 1.75	2.3	3.0	04095105
1.76 thru 2.18	2.7	3.5	04095106

CARRIER WIDTH** (inches)	MOUNTING BRACKET PART NO.
4.00	03946501
6.00	03946502
8.00	03946503
10.00	03946504
12.00	03946505
14.00	03946506
16.00	03946507
18.00	03946508

** Mounting bracket length is 0.25" greater than carrier width.



Gleason Reel Corp.

600 S. Clark St.
Mayville, Wisconsin 53050-0026
Phone 920-387-4120 • FAX 920-387-4189



Zampini Industrial Group

Trusted Industrial Suppliers Since 1986

85 Industrial Circle, Suite 2211

Lincoln, RI 02865

USA

Factory Authorized Gleason Reel Suppliers
FAST Quotes, FAST Delivery!



**ZAMPINI
INDUSTRIAL
GROUP**



Contact Us For Your Gleason Reel Products and Parts Today!

Email Us



info@AirToolPro.com

Call Us



1-800-353-4676
1-401-305-7997

Fax Us



1-401-305-7988



**We Respond
FAST!**
Minimize Your
Downtime!



**Numerous
Ways To
Get Pricing**



**Guaranteed
Satisfaction!**
Excellent Service
Since 1987!



**Everyday Discounts
Quantity Discounts
Email Specials
Low Price Guarantee**