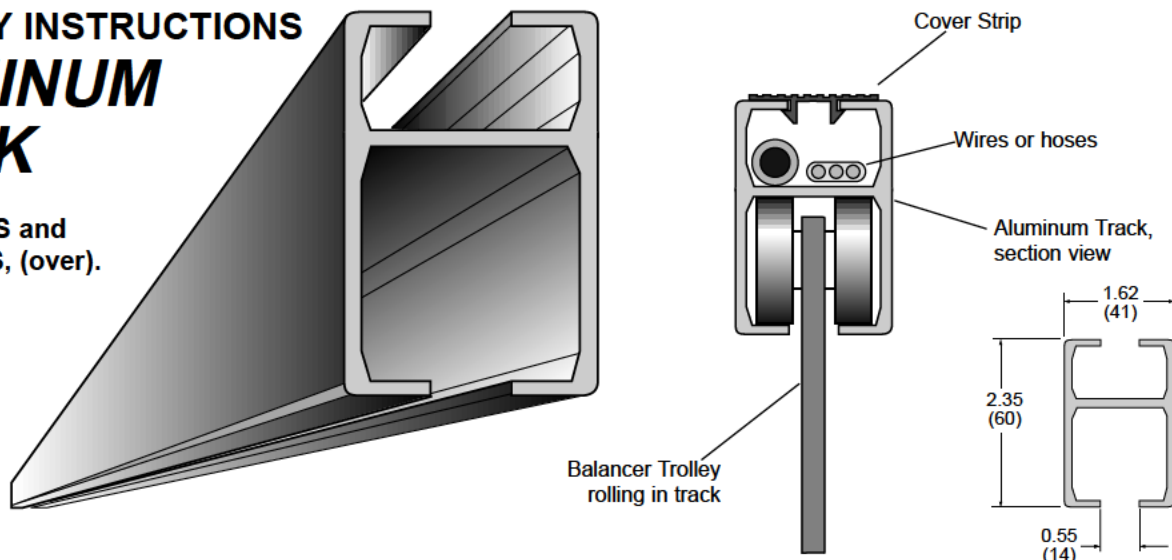
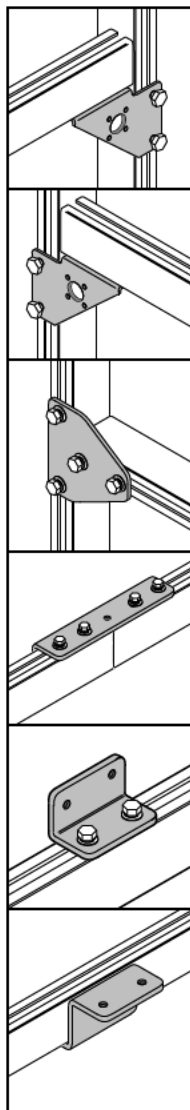
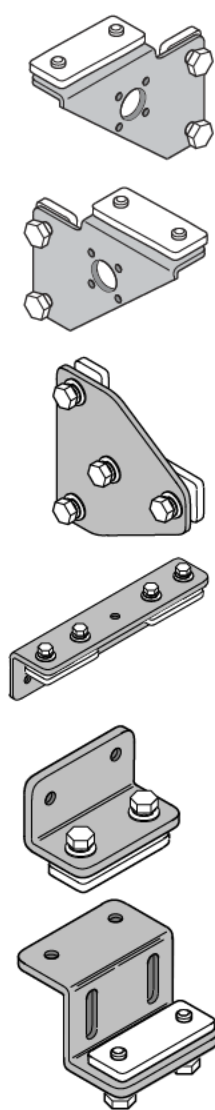


ASSEMBLY INSTRUCTIONS ALUMINUM TRACK

See **EXAMPLES** and **SUGGESTIONS**, (over).



Extruded aluminum sections feature double tracks (top and bottom), one for trolleys and the other for mounting components or concealing hose or cable. Inside dimensions of the larger section fits standard WS50 trolleys, brackets, stops, etc. In addition, there is a full assortment of construction brackets, shown below, designed to fit either top or bottom track. Brackets slide into track from the end, and clamp in place with track nuts. If more than one bracket is to be used in track section, they must be put into track in order. Brackets cannot be inserted into center of track section. **NOTE: Horizontal track must have a support hanger every 6.0 ft.(1.8m) to maintain rated capacity. Maximum rated capacity: 50 lbs.(22.5 Kg) when used as tool rail or other horizontal support.**



FRAMING BRACKETS RIGHT HAND & LEFT HAND VERSIONS

USE: Perpendicular, non-crossing track junction. Often used to support rail between uprights.

Punched and drilled to accept standard electrical boxes. Larger (1.1"dia.) hole can also be used for mounting of air line fitting for pneumatic tools.

T-PLATE

USE: Perpendicular, non-crossing track junction (compare track orientation to illustration above). Use inside or outside of structure. Install vertically or horizontally.

SPLICE ANGLE

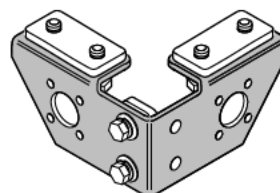
USE: Allows precise joining for unrestricted trolley movement on long track runs. See note above regarding maximum support spacing.

ANGLE MOUNTING BRACKET

USE: Hang rail to wall or other vertical support. Also attach sound boards, plywood, etc. to sides of structures.

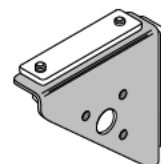
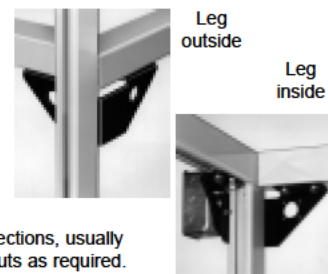
TOP MOUNTING BRACKET

USE: Attach top to benches, tables, sound control booths.



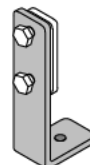
CORNER BRACKET

USE: Join three perpendicular track sections, usually at corner of structure. Reverse track nuts as required.



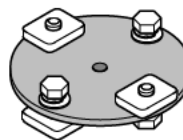
ANGLE BRACKET

USE: Join track sections at right angles.



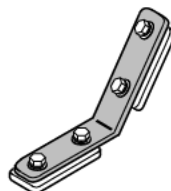
LEVELER FOOT

USE: Forms smooth foot at bottom of track sections used as legs. Adjust to level structure by loosening track nuts, repositioning foot, and retightening nuts.



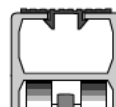
HANGER DISK

USE: Join track sections that cross at right angles. Also hang rails from ceiling, beams, other supports.



ANGLE BRACE BRACKET and 17" ANGLE BRACE

Provides more rigidity than Angle Bracket only. Do not use without Angle Bracket (above) or Corner Bracket (shown here) to fully triangulate structure.



COVER STRIP

USE: Fills groove in track. Keeps out dirt and debris, improves appearance.

EXAMPLES and SUGGESTIONS ALUMINUM TRACK

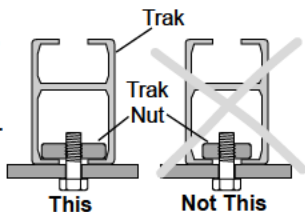
ASSEMBLY

Because of its unique versatility, aluminum track and components are sold as individual pieces, allowing you to design and build structures that best suit your needs. Shown here are partially or fully assembled structures which will (A) give you an indication of how the various brackets work, and (B) provide ideas for other uses for this structural/track system. Pay special attention to bracket and track section orientation.

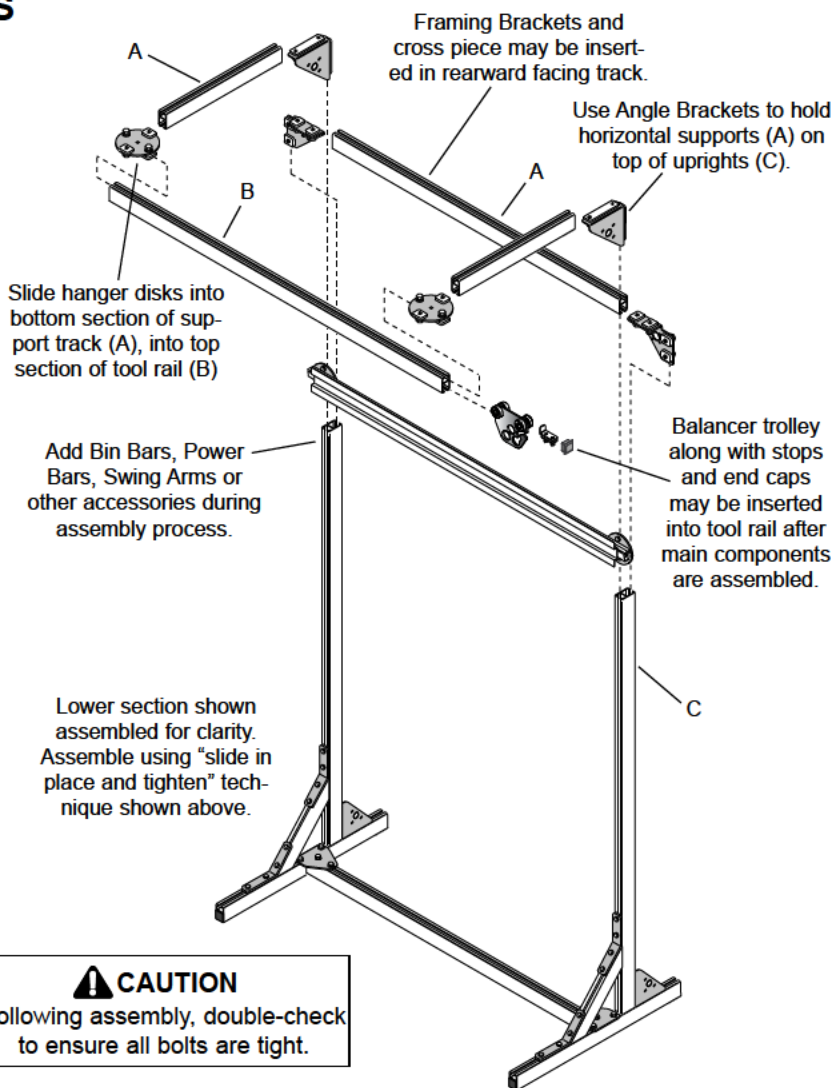
1. Lay out pieces in order they will be assembled. Note that brackets and other components must be inserted into the track "in order" because adding components later may require partial disassembly.

2. To install brackets, loosen bolts and slide track nuts into track sections.

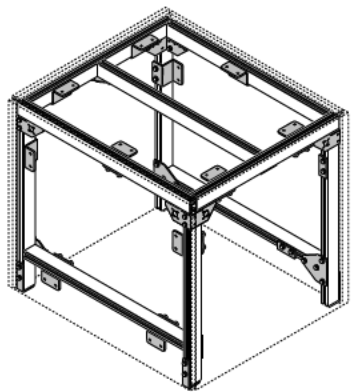
NOTE: Orient rectangular trak nuts so widest dimension lies across opening as shown here. Position bracket in approximate location, and tighten only enough to temporarily hold bracket in position.



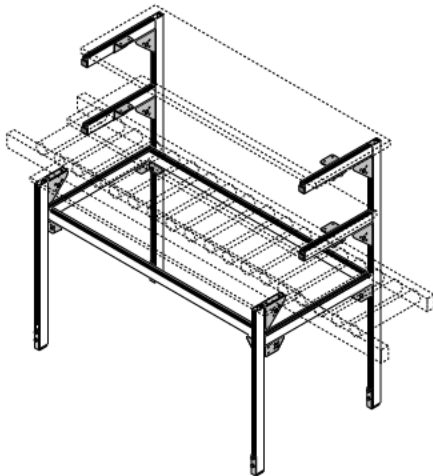
3. After all components are assembled, set components in final position and square-up assembly. Then, securely tighten track nut bolts.



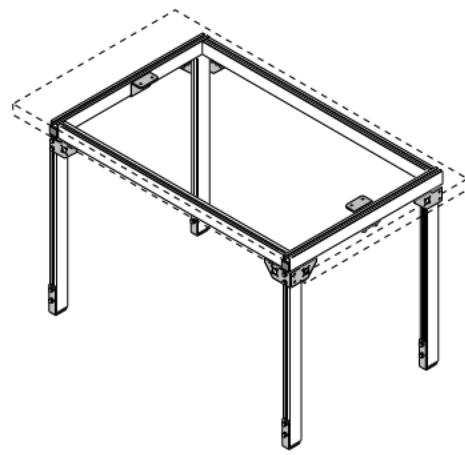
CAUTION
Following assembly, double-check to ensure all bolts are tight.



Sound enclosure uses Angle Mounting Brackets and Top Mounting Brackets to hold acoustical boards to sides and top.



Custom built conveyor support features work surface in front and two shelves above conveyor.



Simple table or bench design features post-and-lintel construction at corners for maximum strength



Workplace Solutions

600 South Clark St.
Mayville, WI 53050
Phone 920-387-4120



Zampini Industrial Group

Trusted Industrial Suppliers Since 1986

85 Industrial Circle, Suite 2211

Lincoln, RI 02865

USA

Factory Authorized Gleason Reel Suppliers
FAST Quotes, FAST Delivery!



ZAMPINI INDUSTRIAL GROUP



Contact Us For Your Gleason Reel Products and Parts Today!

Email Us

Call Us

Fax Us



info@AirToolPro.com

1-800-353-4676
1-401-305-7997

1-401-305-7988



We Respond **FAST!**
Minimize Your Downtime!



Numerous Ways To Get Pricing



Guaranteed Satisfaction!
Excellent Service Since 1987!



Everyday Discounts
Quantity Discounts
Email Specials
Low Price Guarantee