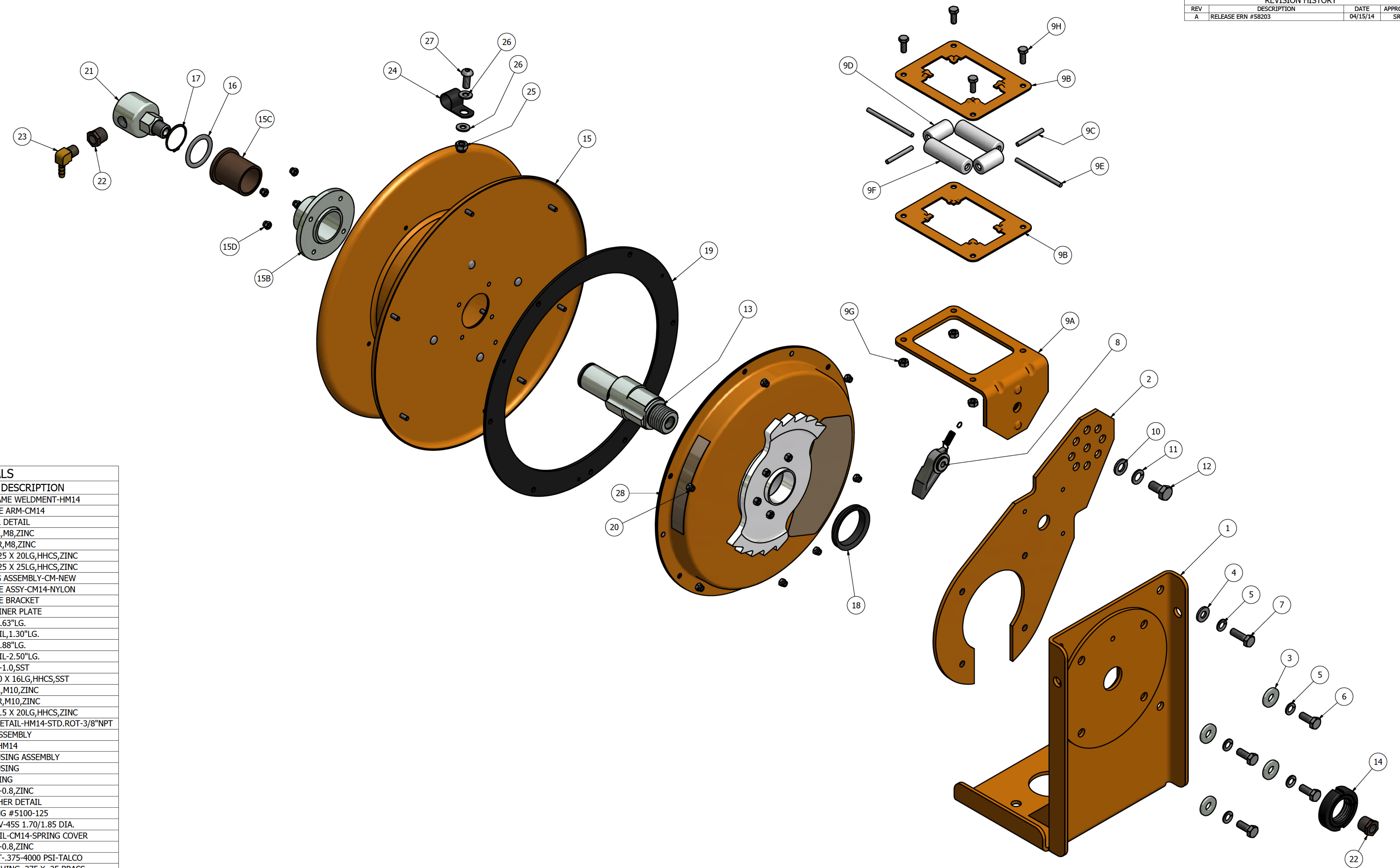


FSCM NO. HM14-4
DWG NO. HM14-4
SHEET 1

REVISION HISTORY			
REV	DESCRIPTION	DATE	APPROVED
A	RELEASE ERN #58203	04/15/14	SRK

NOTES



BILL OF MATERIALS

ITEM	QTY	PART NUM	DESCRIPTION
1	1	032631	VERTICAL FRAME WELDMENT-HM14
2	1	054601	ROLLER GUIDE ARM-CM14
3	4	036013	FLAT WASHER DETAIL
4	1	028974	FLAT WASHER,M8,ZINC
5	5	023279	LOCK WASHER,M8,ZINC
6	4	027887	SCREW M8-1.25 X 20LG,HHCS,ZINC
7	1	029343	SCREW M8-1.25 X 25LG,HHCS,ZINC
8	1	054625	LOCKING DOG ASSEMBLY-CM-NEW
9	1	024466	ROLLER GUIDE ASSY-CM14-NYLON
9A	1	024467	ROLLER GUIDE BRACKET
9B	2	024468	ROLLER RETAINER PLATE
9C	2	024469	ROLLER PIN-1.63"LG.
9D	2	024470	ROLLER DETAIL,1.30"LG.
9E	2	024471	ROLLER PIN-2.88"LG.
9F	2	024472	ROLLER DETAIL-2.50"LG.
9G	4	028271	ESNA NUT,M6-1.0,SST
9H	4	03508704	SCREW M6-1.0 X 16LG,HHCS,SST
10	1	018972	FLAT WASHER,M10,ZINC
11	1	028138	LOCK WASHER,M10,ZINC
12	1	028131	SCREW M10-1.5 X 20LG,HHCS,ZINC
13	1	027485	MAINSHAFT DETAIL-HM14-STD.ROT-3/8"NPT
14	1	021484	CLAMP NUT ASSEMBLY
15	1	024294	SPOOL ASSY-HM14
15A	1	028061	BEARING HOUSING ASSEMBLY
15B	1	028065	BEARING HOUSING
15C	1	028062	FLANGE BEARING
15D	4	028144	ESNA NUT,M5-0.8,ZINC
16	1	027456	THRUST WASHER DETAIL
17	1	107185	RETAINING RING #5100-125
18	1	025032	V-RING SEAL V-45S 1.70/1.85 DIA.
19	1	021494	GASKET DETAIL-CM14-SPRING COVER
20	7	028144	ESNA NUT,M5-0.8,ZINC
21	1	604123	SWIVEL JOINT-.375-4000 PSI-TALCO
22	2	024516	REDUCER BUSHING,.375 X .25,BRASS
23	1	024521	HOSE BARB,90,.25NPT,BRASS
24	1	604127	CABLE CLAMP-ARDEN-.50"DIA.
25	1	P06-01	ESNA NUT,.31-18UNC,ZINC
26	2	101206	FLAT WASHER,.25,ZINC
27	1	023304	SCREW .31-18UNC X .75,SBHCS,ZINC
28	1	05611801	SPRING MOTOR REPLACEMENT KIT-MODEL A
28	1	05611802	SPRING MOTOR REPLACEMENT KIT-MODEL B
28	1	05611803	SPRING MOTOR REPLACEMENT KIT-MODEL C
28	1	05611811	SPRING MOTOR REPLACEMENT KIT-MODEL U

<small>UNLESS OTHERWISE NOTED ALL DIMENSIONS ARE INCHES. TOLERANCES AS FOLLOWS: DECIMAL .X ± .1 DECIMAL .XX ± .03 DECIMAL .XXX ± .010 ANGLES DEG-MIN ± 1'00"</small>	APPLICATION		GLEASON REEL CORP. MAYVILLE, WISCONSIN Inventor Drawing
	NEXT ASSY	SIM TO	
<small>THIS DRAWING AND ALL INFORMATION HEREON IS THE PROPERTY OF GLEASON REEL AND CONFORMS TO GLEASON REEL ENGINEERING POLICY. IT MUST NOT BE COPIED, REPRODUCED, OR SUBMITTED TO OTHERS WITHOUT WRITTEN AUTHORIZATION AND ALL REPRODUCTIONS ARE SUBJECT TO RETURN ON DEMAND.</small>	DRAWN: SRK APPROVED:	DATE: 04/15/14 DATE:	FSCM NO. HM14-4 DWG NO. HM14-4 REV. A
DO NOT SCALE DRAWING!			SHEET 1 OF 1



Zampini Industrial Group

Trusted Industrial Suppliers Since 1986

85 Industrial Circle, Suite 2211

Lincoln, RI 02865

USA

Factory Authorized Gleason Reel Suppliers
FAST Quotes, FAST Delivery!



**ZAMPINI
INDUSTRIAL
GROUP**



Contact Us For Your Gleason Reel Products and Parts Today!

Email Us



info@AirToolPro.com

Call Us



1-800-353-4676
1-401-305-7997

Fax Us



1-401-305-7988



**We Respond
FAST!**
Minimize Your
Downtime!



**Numerous
Ways To
Get Pricing**



**Guaranteed
Satisfaction!**
Excellent Service
Since 1987!



**Everyday Discounts
Quantity Discounts
Email Specials
Low Price Guarantee**